

Discover SPYNEL V-LRF

Brand new options for
Spynel-S and Spynel-X

NEW!
*Visible Channel,
Laser Range Finder*



The ultimate solution for 24/7 situational awareness



Better threat identification system



Compact and easy to use



Compatible with Cyclope software

www.hgh-infrared.com

 **Infrared
Systems**

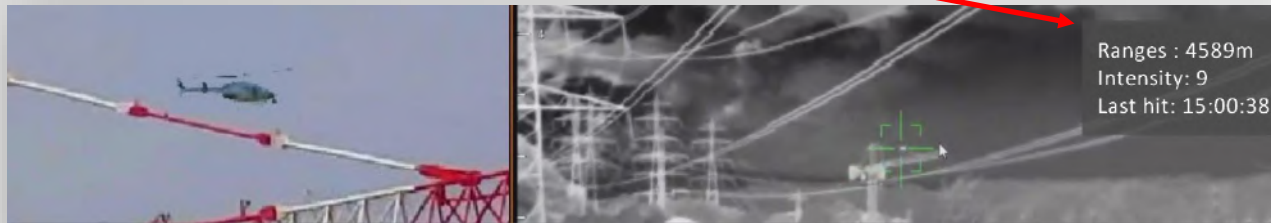
▶ **NEW!** Discover Spynel's V-LRF option

Visible Channel,
Laser Range Finder

Spynel-S and -X can now be equipped with a Visible Channel and/or a Laser Range Finder!

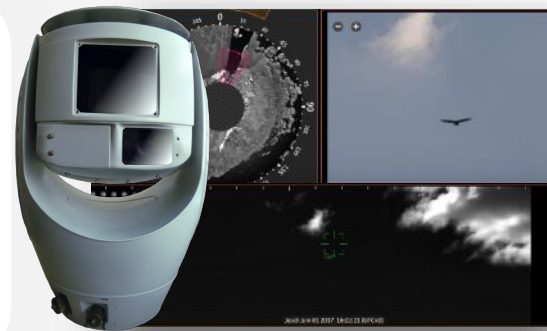
Both of these options are integrated in one single sensor head:

The Visible Camera is aligned with the Infrared Camera and the LRF, allowing them to operate simultaneously!



ABOUT THE VISIBLE CHANNEL

The **Visible Channel** is a full HD (1920x1080) camera with a **continuous optical zoom x30**, allowing to zoom in on a threat. The threat is detected and tracked by the Spynel sensor, thanks to its **panoramic detection system** operated by the Cyclope software. With this brand new continuous optical zoom, the user can **keep an eye on the threat** during the identification phase. The Visible Channel enables to identify all types of objects located within the Spynel's detection range, even the smallest drones!



ABOUT THE LASER RANGE FINDER

The eyesafe **Laser Range Finder** provides the user with the exact distance of all detected threats on land, at sea or in the air, regardless of their size (micro-drone, RIB, human...)

IDEAL FOR :

- ▶ UAV detection
- ▶ Human intrusion
- ▶ Maritime surveillance

MAIN BENEFITS

- ▶ A **better threat identification** system with no blind spot
- ▶ A **compact and easy to use** solution, fully integrated
- ▶ One **single interface**: detection, recognition, tracking & identification on one screen with *Cyclope*



+ INFO

hgh@hgh.fr

+33 1 69 35 47 70

10, rue Maryse Bastié,

91430 IGNY, France

www.hgh-infrared.com